



Maternal Sister to the Dam of Lot 63:
Appealing Planet Halley-ET (EX-90 EX-MS)

Maternal Sister to the Dam of Lot 63:
Appealing Active Holly-ET (EX-90 EX-91-MS)

63

SWAMPY-HOLLOW HOPE

D.O.B 3/15/2013 Reg. #142344886 100%RHA
9K GTPI +2537

PTA +2061M +92F +65P 69%R 6/2013

PTA +924NM +.06%F +.01%P

PTA +7.0PL 2.73SCS +.5DPR 4.1%DCE

PTA +2.89T +2.80UDC +2.06FLC 6/2013

Maternal Sisters to the Dam of Lot 63:

- Appealing Planet Halley-ET (EX-90 VEEVE)

12/12 PTA +1954GTPI +1707M +2.50T

2-00 365 35700 3.4 1203 3.0 1060

(Pictured above)

*Fresh again & looks spectacular!!

*Sold for \$30,000 in 2011 Nat'l Conv.

- Appealing Active Holly-ET (EX-90, 91-MS)

1-11 365 36310 4.0 1451 2.9 1051

(Pictured above)

• by Active VG-87

• by Jeeves VG-85 & VG-85

• by Planet VG-87

SIRE:

SEAGULL-BAY SUPERSIRE-ET

69981349 TV TL TY TD

GTPI +2527

PTA +2484M +113F +78P 73%R 4/2013

PTA +938NM +.09%F +.01%P 100%US

PTA +6.1PL 2.77SCS -.2DPR 5%DCE

PTA +2.67T +2.02UDC +1.72FLC 72%R 4/2013

DAM:

APPEALING OBSERVER HAZEL-ET

66551182

GP-82 ++G++ 2-01 GTPI +2104

PTA +1364M +51F +30P 76%R 4/2013

PTA +551NM +.00%F -.04%P

PTA +4.8PL 2.83SCS +.5DPR 6%DCE

PTA +2.44T +2.65UDC +1.76FLC 75%R 4/2013

1-11 2 77 5861 3.9%F 2.9%P

• Scored just fresh...will be VG as a 2-Yr-Old.

• Will be pictured in July

ROYLANE SOGRA ROBUST-ET 64966739

TR TV TL TD

VG-88 VVVV 3-03 GTPI +2245

AMMON-PEACHEY SHAUNA-ET 66228178

VG-87 VEV+V DOM 2-04 GTPI +2302

2-01 3 365 35116 4.1 1427 3.3 1146

• 12 sons already accepted into AI!!

DE-SU OBSERVER-ET 6597481 TR TV TL

TY TD

EX-90 EVEV 4-06 GTPI +2332

APPEALING SHOTTLE HANNAH-ET 62669860

VG-86 EEE++ GMD DOM 4-08 GTPI +1778

4-01 2 365 45980 3.2 1458 3.0 1383

1-09 2 365 39070 3.5 1386 3.0 1190

LIFE 1521 150460 3.4 5057 3.2 4780

• 12 Sons in A.I.

• 12 milking daughters 1st lact. ave. 33,000M

• All scored offspring ave. VG-85

2nd Dam: Ladys-Manor Hadara T-ET

(VG-88 +EVVV DOM)

3-03 365 39850 3.8 1532 3.1 1244

Lifetime 132260 3.9 5173 3.3 4322

3rd Dam: Ladys-Manor Tawny-ET

(VG-88 EEEVV GMD-DOM)

5-00 365 37660 3.7 1412 3.2 1200

4th Dam: Ladys-Manor Tippy Tonya-ET

(VG-87 EEEE+ DOM)

4-06 365 42030 3.8 1604 3.0 1371

Lifetime 127510 3.8 4801 3.2 4073

5th Dam: Ladys-Manor Topgun Tippy-ET

(VG-86 VEV++ GMD-DOM)

2-01 365 29156 3.8 1116 3.2 933

6th Dam: Ladys-Manor Top Gun Jemini

EX-93,3E EEEEE GMD-DOM

3-11 365 36080 3.5 1246 3.1 1106

Lifetime 150300 3.8 5699 3.0 4495

7th Dam: VG-88 GMD

8th Dam: VG-85

9th Dam: EX-90,2E GMD



- Full Sister to the #1 GLPI Heifer in the World!!
- Big numbers on both sides of the border!

Dam of Lot 64: Ri-Val-Re Obsrvr Nikki-ET

Sells as Lot 17 & Full Sister to Lot 64
: Ri-Val-Re Suprsre Nikk-ET

64

RI-VAL-RE SUPRSRE NEILA-ET *TL *TD

D.O.B 1/29/2013 Reg. # 71259299 100%RHA
77K GTPI +2227 / GLPI +3346 / DGV +3351
PTA +2203M +81F +72P 70%R 4/2013
PTA +636NM +.00%F +.02%P
PTA +2.9PL 3.16SCS -.1DPR 7%DCE
PTA +2.60T +2.17UDC +.83FLC 4/2013
CAN GPA +3034M +108F +109P

SIRE:
SEAGULL-BAY SUPERSIRE-ET
69981349 TV TL TY TD
 GTPI +2527
 PTA +2484M +113F +78P 73%R 4/2013
 PTA +938NM +.09%F +.01%P 100%US
 PTA +6.1PL 2.77SCS -.2DPR 5%DCE
 PTA +2.67T +2.02UDC +1.72FLC 72%R 4/2013

DAM:
RI-VAL-RE OBSRVR NIKKI-ET
69928434
 50K GTPI +2283
 PTA +1996M +69F +70P 74%R 4/2013
 PTA +667NM -.01%F +.04%P
 PTA +3.3PL 3.01SCS +.4DPR 6%DCE
 PTA +2.85T +2.17UDC +1.64FLC 74%R 4/2013

ROYLANE SOCRA ROBUST-ET 64966739
TR TV TL TD
 VG-88 VVVV 3-03 GTPI +2245
AMMON-PEACHEY SHAUNA-ET 66228178
 VG-87 VEV+V DOM 2-04 GTPI +2302
 2-01 3 365 35116 4.1 1427 3.3 1146
 • 12 sons already accepted into AI!!

DE-SU OBSERVER-ET 6597481 TR TV TL TY TD
 EX-90 EVEV 4-06 GTPI +2332
RI-VAL-RE GOLDWYN NADINE 62067960
 VG-87 VV+EV DOM 3-01 GTPI +1978
 PTA +1039M +38F +44P 81%R 4/2013
 PTA +415NM +.00%F +.05%P
 PTA +1.7PL 3.01SCS +.5DPR 6%DCE
 PTA +2.36T +1.46UDC +2.15FLC 80%R 4/2013
 2-03 2 365 30840 3.5 1082 3.5 1064
 • 8 Sons in A.I.
 • Gr'daughters as high as +2645 GTPI!!

3rd Dam:
Ri-Val-Re Oman Nike (VG-85)
 5-00 2 365 35730 3.9 1383 3.3 1195
 LIFE 1242 106560 3.7 3912 3.4 3663
4th Dam: Ri-Val-Re Jesther Nina-ET
 (VG-88 GMD DOM)
 6-03 2 365 41990 3.6 1506 3.4 1407
 LIFE 1658 131260 3.5 4601 3.5 4557
5th Dam: Peckenstein Terry Nike-ET
 (VG-85 GMD DOM)
 2-01 2 365 34580 3.8 1319 3.3 1144
6th Dam: Peckenstein Elton Nikki-ET
 (EX-90 DOM)
 4-10 2 365 37500 4.2 1566 3.3 1227
7th Dam: Peckenstein BStar Scarlet
 (VG-86 GMD DOM)
 2-01 2 365 33710 3.8 1280 3.1 1052
8th Dam: Ramadaly Melvin-209 Kay
 (EX-90 GMD DOM)
 4-06 2 365 42090 4.5 1898 3.0 1278
 LIFE 1980 165230 4.1 6771 3.2 5292



• Something different!!
(Transformer X Trigger!!)

3rd Dam of Lot 65:
Ri-Val-Re Adv Win-Go-Red-ET (EX-90 EX-MS)

Sells as Lot 46 & Full Sister to Lot 65:
Ri-Val-Re Trnsfrm Opal-P-ET *PO

RI-VAL-RE TRNSFRM ONA-P-ET *PO *TL *TD

65

D.O.B 3/4/2013 Reg. #71259328 100%RHA
77K GTPI +1921 / GLPI +2578 / DGV +2595
PTA +310M +40F +24P 70%R 4/2013
PTA +419NM +.11%F +.06%P
PTA +3.4PL 2.84SCS +2DPR 9%DCE
PTA +1.86T +2.15UDC +1.88FLC 4/2013

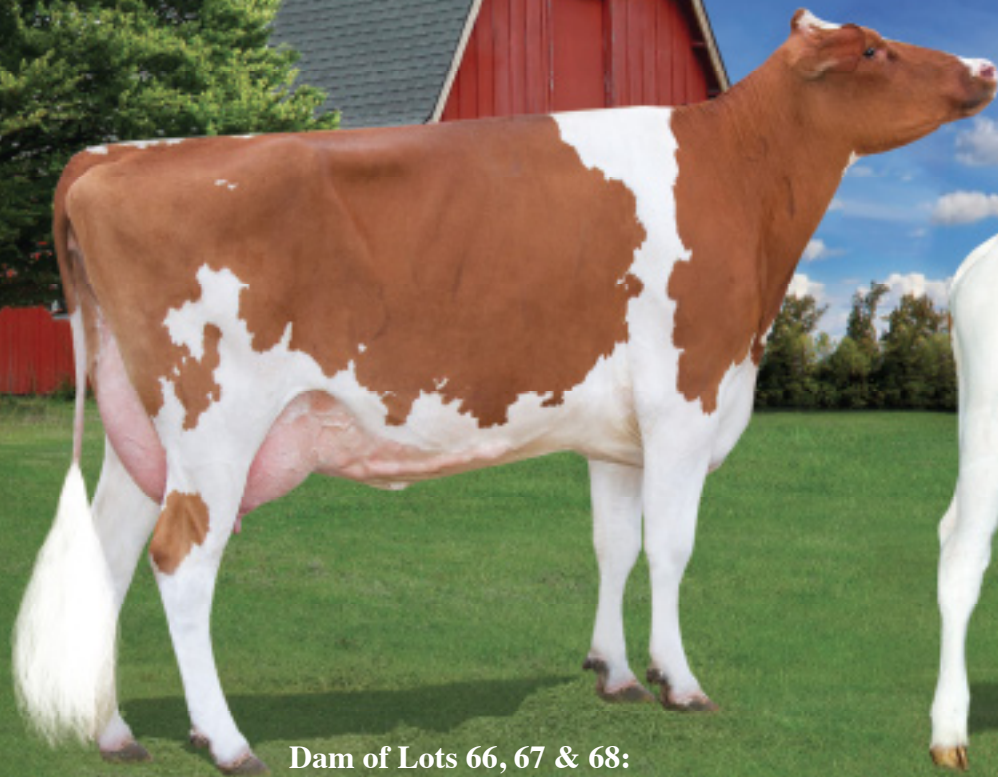
SIRE:
VENTURE TRANSFORMER P-ET
11085176C PO TV TL TY TD
50K GTPI +2001
PTA +634M +44F +35P 76%R 4/2013
PTA +525NM +.08%F +.05%P 100%US
PTA +3.7PL 2.64SCS +3DPR 7%DCE
PTA +1.61T +1.93UDC +1.12FLC 74%R 4/2013

DAM:
RI-VAL-RE TRIGGER OPAL-ET
69928455 RC
GTPI +2115
PTA +671M +54F +34P 72%R 4/2013
PTA +599NM +.11%F +.05%P
PTA +5.1PL 2.87SCS +1.2DPR 7%DCE
PTA +2.17T +1.59UDC +2.52FLC 72%R 4/2013

LONG-LANGS OMAN OMAN-ET
135746776 TV TL TY TD
VG-85 VVV+ 4-11 GM GTPI +2185
ARRON DOON OSWALD TWIST LU P
9534611C TR PO
CAN VG-87-5Y GTPI +1695
3-03 2 365 31435 4.2 1312 3.3 1052

LARS-ACRES SHOT TRIGGER-ET
62253367 TV TL TY TD
VG-87 VVVV 5-10 GM GTPI +2040
RI-VAL-RE LB MINI-P-RED-ET 66473496 PO
GTPI +1882
PTA +392M +36F +21P 75%R 4/2013
PTA +363NM +.08%F +.03%P
PTA +2.6PL 3.02SCS +1.1DPR 7%DCE
PTA +2.16T +1.49UDC +2.05FLC 74%R 4/2013

3rd Dam:
Ri-Val-Re Adv Win-Go-Red-ET
(EX-90 EEVVE)
4-00 2 305 29740 4.0 1197 3.2 964
4th Dam:
Ri-Val-Re Range Redwing-Red
(VG-88 EE+VV)
4-05 2 365 35690 4.2 1488 3.1 1119
LIFE 1806 139910 4.0 5527 3.1 4339
5th Dam: Elm-Park Celeste-ET *RC
3-00 2 365 27700 2.9 789 3.0 834
6th Dam:
Allimar Misty Calico-Red (EX-90 VEVE)
5-06 2 365 49310 3.4 1653 3.0 1498
LIFE 1720 160030 3.3 5206 3.2 5133
7th Dam:
Allimar Cavalier Chestnut-Red (VG-88)
7-03 2 328 22390 3.6 803 3.5 774
LIFE 1908 119800 3.4 4073 3.4 4059
8th Dam: Fletridge Pilot Cocoanut (VG-85)
6-03 2 294 27050 3.2 860 3.1 739



Dam of Lots 66, 67 & 68:
Ri-Val-Re Adv Win-Go-Red-ET (EX-90 EX-MS)



From the same family as Lots 66, 67 & 68:
Ri-Val-Re The Best-P-Red-ET



RI-VAL-RE MCCUTCH DENISE-ET *RC *TL *TD

66

D.O.B 3/1/2013 Reg. # 71259315 99%RHA
GTPI +2022 / GLPI +2567 / DGV +2512
PTA +1047M +66F +39P 71%R 4/2013
PTA +408NM +.10%F +.03%P
PTA +1.6PL 3.04SCS -.9DPR 6%DCE
PTA +2.77T +2.22UDC +2.12FLC 4/2013

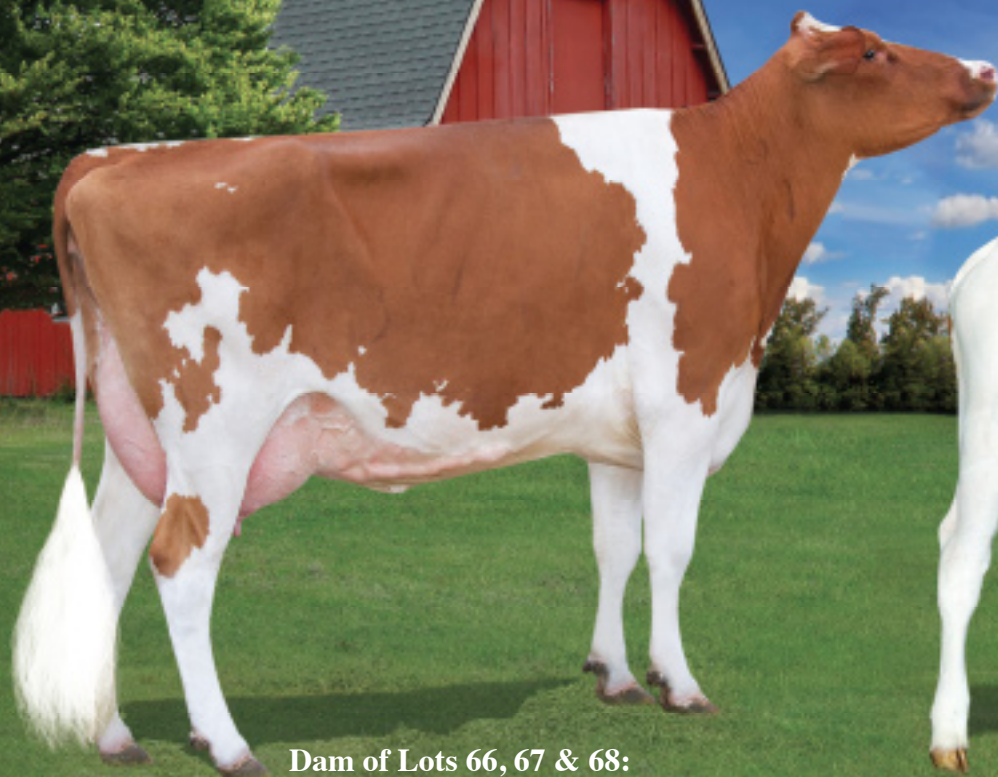
SIRE:
DE-SU BKM MCCUTCHEN 1174-ET
69990138 99%RHA TV TL TY TD
VG-88 VVVV 1-11 50K GTPI +2393
PTA +1345M +67F +52P 75%R 4/2013
PTA +655NM +.07%F +.04%P 100%US
PTA +4.0PL 2.80SCS +.2DPR 5%DCE
PTA +3.82T +3.35UDC +2.91FLC 73%R 4/2013

DAM:
RI-VAL-RE ADV WIN-GO-RED-ET
64621428
EX-90 EEVVE 4-07 GTPI +1747
2-03 2 365 27620 4.2 1151 3.6 982
4-00 2 305 29740 4.0 1197 3.2 964

DE-SU 521 BOOKEM -ET 66636657
99%RHA TR TV TL TY TD
50K GTPI +2204
SULLY SHOTTLE MAY-TW 138218285
VG-87 VVEVV DOM 5-09 50K GTPI +2118
2-02 3 365 34110 3.2 1095 3.3 1130

KHW KITE ADVENT-RED-ET 133002953
TV TL TD
EX-94 EEEE 5-00 GTPI +1566
RI-VAL-RE RANGE REDWING-RED
123303727
VG-88 EE+VV GMD DOM 7-03 GTPI +1614
4-05 2 365 35690 4.2 1488 3.3 1186
1-09 2 365 29950 3.9 1157 3.3 993
6-10 2 365 28780 3.9 1113 3.2 919
3-02 2 365 29410 3.7 1079 3.2 950
LIFE 1806 139910 4.0 5527 3.3 4604

3rd Dam:
Elm-Park Celeste-ET *RC
3-00 2 365 27700 2.9 789 3.0 834
4th Dam:
Allimar Misty Calico-Red (EX-90 VEVE)
5-06 2 365 49310 3.4 1653 3.0 1498
LIFE 1720 160030 3.3 5206 3.2 5133
5th Dam:
Allimar Cavalier Chestnut-Red (VG-88)
7-03 2 328 22390 3.6 803 3.5 774
LIFE 1908 119800 3.4 4073 3.4 4059
6th Dam:
Fleetridge Pilot Cocanut (VG-85)
6-03 2 294 27050 3.2 860 3.1 739



Dam of Lots 66, 67 & 68:
Ri-Val-Re Adv Win-Go-Red-ET (EX-90 EX-MS)



From the same family as Lots 66, 67 & 68:
Ri-Val-Re The Best-P-Red-ET



RI-VAL-RE MCCUTCH CELESTE-ET *RC *TL *TD

67

D.O.B 3/4/2013 Reg. # 71259321 100%RHA
GTPI +1984 / GLPI +2513 / DGV +2448
PTA +440M +41F +28P 71%R 4/2013
PTA +381NM +.09%F +.06%P
PTA +2.3PL 3.01SCS +.6DPR 6%DCE
PTA +2.75T +2.30UDC +1.89FLC 4/2013

SIRE:
DE-SU BKM MCCUTCHEN 1174-ET
69990138 99%RHA TV TL TY TD
VG-88 VVVV 1-11 50K GTPI +2393
PTA +1345M +67F +52P 75%R 4/2013
PTA +655NM +.07%F +.04%P 100%US
PTA +4.0PL 2.80SCS +.2DPR 5%DCE
PTA +3.82T +3.35UDC +2.91FLC 73%R 4/2013

DAM:
RI-VAL-RE ADV WIN-GO-RED-ET
64621428
EX-90 EEVVE 4-07 GTPI +1747
2-03 2 365 27620 4.2 1151 3.6 982
4-00 2 305 29740 4.0 1197 3.2 964

DE-SU 521 BOOKEM -ET 66636657
99%RHA TR TV TL TY TD
50K GTPI +2204
SULLY SHOTTLE MAY-TW 138218285
VG-87 VVEVV DOM 5-09 50K GTPI +2118
2-02 3 365 34110 3.2 1095 3.3 1130

KHW KITE ADVENT-RED-ET 133002953
TV TL TD
EX-94 EEEE 5-00 GTPI +1566
RI-VAL-RE RANGE REDWING-RED
123303727
VG-88 EE+VV GMD DOM 7-03 GTPI +1614
4-05 2 365 35690 4.2 1488 3.3 1186
1-09 2 365 29950 3.9 1157 3.3 993
6-10 2 365 28780 3.9 1113 3.2 919
3-02 2 365 29410 3.7 1079 3.2 950
LIFE 1806 139910 4.0 5527 3.3 4604

3rd Dam:
*Elm-Park Celeste-ET *RC*
3-00 2 365 27700 2.9 789 3.0 834
4th Dam:
Allimar Misty Calico-Red (EX-90 VEVE)
5-06 2 365 49310 3.4 1653 3.0 1498
LIFE 1720 160030 3.3 5206 3.2 5133
5th Dam:
Allimar Cavalier Chestnut-Red (VG-88)
7-03 2 328 22390 3.6 803 3.5 774
LIFE 1908 119800 3.4 4073 3.4 4059
6th Dam:
Fleetridge Pilot Cocoanut (VG-85)
6-03 2 294 27050 3.2 860 3.1 739



Dam of Lots 66, 67 & 68:
Ri-Val-Re Adv Win-Go-Red-ET (EX-90 EX-MS)



From the same family as Lots 66, 67 & 68:
Ri-Val-Re The Best-P-Red-ET



RI-VAL-RE MCCUTCH QUINN-ET *RC

68

D.O.B 3/4/2013 Reg. # 71259324 100%RHA
77K GTPI +2019 / GLPI +2546 / DGV +2483
PTA +816M +55F +32P 71%R 4/2013
PTA +335NM +.09%F +.03%P
PTA +.7PL 2.94SCS +.0DPR 6%DCE
PTA +3.29T +2.54UDC +1.72FLC 4/2013

SIRE:
DE-SU BKM MCCUTCHEN 1174-ET
69990138 99%RHA TV TL TY TD
VG-88 VVVV 1-11 50K GTPI +2393
PTA +1345M +67F +52P 75%R 4/2013
PTA +655NM +.07%F +.04%P 100%US
PTA +4.0PL 2.80SCS +.2DPR 5%DCE
PTA +3.82T +3.35UDC +2.91FLC 73%R 4/2013

DAM:
RI-VAL-RE ADV WIN-GO-RED-ET
64621428
EX-90 EEVVE 4-07 GTPI +1747
2-03 2 365 27620 4.2 1151 3.6 982
4-00 2 305 29740 4.0 1197 3.2 964

DE-SU 521 BOOKEM -ET 66636657
99%RHA TR TV TL TY TD
50K GTPI +2204
SULLY SHOTTLE MAY-TW 138218285
VG-87 VVEVV DOM 5-09 50K GTPI +2118
2-02 3 365 34110 3.2 1095 3.3 1130

KHW KITE ADVENT-RED-ET 133002953
TV TL TD
EX-94 EEEE 5-00 GTPI +1566
RI-VAL-RE RANGE REDWING-RED
123303727
VG-88 EE+VV GMD DOM 7-03 GTPI +1614
4-05 2 365 35690 4.2 1488 3.3 1186
1-09 2 365 29950 3.9 1157 3.3 993
6-10 2 365 28780 3.9 1113 3.2 919
3-02 2 365 29410 3.7 1079 3.2 950
LIFE 1806 139910 4.0 5527 3.3 4604

3rd Dam:
*Elm-Park Celeste-ET *RC*
3-00 2 365 27700 2.9 789 3.0 834
4th Dam:
Allimar Misty Calico-Red (EX-90 VEVE)
5-06 2 365 49310 3.4 1653 3.0 1498
LIFE 1720 160030 3.3 5206 3.2 5133
5th Dam:
Allimar Cavalier Chestnut-Red (VG-88)
7-03 2 328 22390 3.6 803 3.5 774
LIFE 1908 119800 3.4 4073 3.4 4059
6th Dam:
Fletridge Pilot Cocomanut (VG-85)
6-03 2 294 27050 3.2 860 3.1 739